



**TRANSPORTATION CABINET**

Frankfort, Kentucky 40622  
www.transportation.ky.gov/

**Steven L. Beshear**  
Governor

**Michael W. Hancock, P.E.**  
Secretary

August 20, 2015

CALL NO. 301  
CONTRACT ID NO. 151242  
ADDENDUM # 2

Subject: Mason County, FD04 SPP 081 1448 005-007  
Letting August 21, 2015

- (1) Revised - Plan Sheets - R2H, R2J, R3, R4, R5, R6, R81, & R83
- (2) Revised - Bid Items - Pages 118-121 of 121

Proposal revisions are available at <http://transportation.ky.gov/Construction-Procurement/>.

Plan revisions are available at <http://www.lynnimaging.com/kytransportation/>.

If you have any questions, please contact us at 502-564-3500.

Sincerely,

A handwritten signature in cursive script that reads "Rachel Mills".

Rachel Mills, P.E.  
Director  
Division of Construction Procurement

RM:ks  
Enclosures



An Equal Opportunity Employer M/F/D

# GENERAL SUMMARY

COUNTY OF	ITEM NO.	SHEET NO.
MASON	9-8303.0	R2H

PREPARED BY \_\_\_\_\_ DATE \_\_\_\_\_  
 CHECKED BY \_\_\_\_\_ DATE \_\_\_\_\_  
 APPROVED BY \_\_\_\_\_ DATE \_\_\_\_\_

ITEM CODE	ITEM	UNIT	TOTAL PROJECT	
1310	REMOVE PIPE	LF	52	
1585	REMOVE DROP BOX INLET (3)	EACH	2	
1810	STANDARD CURB AND GUTTER	LF	14261	
1820	LIP CURB AND GUTTER	LF	216	
1821	LIP CURB AND GUTTER MOD	LF	277	
1875	STANDARD HEADER CURB	LF	581	
1880	BARRIER HEADER CURB	LF	32	
1904	REMOVE CURB	LF	191	
1946	MOUNTABLE MEDIAN TYPE 2A	SQ YD	70	
1982	DELINEATOR FOR GUARDRAIL - WHITE	EACH	82	
1984	DELINEATOR FOR BARRIER - WHITE	EACH	43	
2003	RELOCATE TEMPORARY CONCRETE BARRIER (3)	LF	800	
2091	REMOVE PAVEMENT	SQ YD	92	
2159	TEMPORARY DITCH	LF	4173	
2200	ROADWAY EXCAVATION (A)	CU YD	101118	
2223	GRANULAR EMBANKMENT (9) (12)	CU YD	243	
2242	WATER (2)	M GAL	3.38	
2351	GUARDRAIL STEEL "W" BEAM SINGLE FACE	LF	2393.75	
2360	GUARDRAIL TERMINAL SECTION NUMBER 1	EACH	3	
2367	GUARDRAIL END TREATMENT TYPE 1	EACH	6	
2381	REMOVE GUARDRAIL	LF	1064	
2391	GUARDRAIL END TREATMENT TYPE 4A (4)	EACH	6	
2397	TEMPORARY GUARDRAIL (3)	LF	2100	
2429	RIGHT-OF-WAY MONUMENT TYPE 1	EACH	138	
2432	WITNESS POST	EACH	3	
2483	CHANNEL LINING CLASS II	TON	1056	
2484	CHANNEL LINING CLASS III	TON	299	
2545	CLEARING AND GRUBBING (1)	LS	1	
2555	CONCRETE CLASS B (9)	CU YD	142.6	
2562	TEMPORARY SIGNS (3)	SQ FT	782.5	
2568	MOBILIZATION	LS	1	
2569	DEMOBILIZATION	LS	1	
2585	EDGE KEY	LF	373	
2596	FABRIC-GEOTEXTILE TYPE I	SQ YD	810	
2599	FABRIC-GEOTEXTILE TYPE IV	SQ YD	80437	
2600	FABRIC-GEOTEXTILE TYPE IV FOR PIPE	SQ YD	20221	
2611	HANDRAIL - TYPE A-1	LF	1874	
2625	REMOVE HEADWALL	EACH	4	
2650	MAINTAIN AND CONTROL TRAFFIC (11)	LS	1	
2671	PORTABLE CHANGEABLE MESSAGE SIGN	EACH	2	
2690	SAFELOADING	CU YD	8.3	
2701	TEMPORARY SILT FENCE	LF	4173	
2703	SILT TRAP TYPE "A"	EACH	34	
2704	SILT TRAP TYPE "B"	EACH	34	
2705	SILT TRAP TYPE "C"	EACH	34	
2706	CLEAN SILT TRAP TYPE "A"	EACH	204	
2707	CLEAN SILT TRAP TYPE "B"	EACH	204	
2708	CLEAN SILT TRAP TYPE "C"	EACH	204	
2709	CLEAN TEMPORARY SILT FENCE	LF	2000	
2720	SIDEWALK-4 IN CONCRETE	SQ YD	443	
2726	STAKING	LS	1	
2731	REMOVE STRUCTURE (6)	LS	1	
3171	CONCRETE BARRIER WALL TY 9T (3)	LF	2000	

ITEM CODE	ITEM	UNIT	TOTAL PROJECT	
5950	EROSION CONTROL BLANKET	SQ YD	4263	
5952	TEMPORARY MULCH	SQ YD	163650	
5953	TEMPORARY SEEDING AND PROTECTION (5)	SQ YD	16365	
5960	FERTILIZER 10-20-20	TON	8.5	
5963	INITIAL FERTILIZER	TON	5.1	
5992	AGRICULTURAL LIMESTONE	TON	102	
5985	SEEDING AND PROTECTION	SQ YD	163650	
5990	SODDING (10)	SQ YD	532	
6510	PAVEMENT STRIPING - TEMP PAINT - 4 INCH (3)	LF	33384	
6514	PAVEMENT STRIPING - PERM PAINT - 4 INCH	LF	23865	
6567	PAVE MARKING - THERMO STOP BAR - 12 INCH	LF	182	
6569	PAVE MARKING - THERMO CROSS-HATCH	SQ FT	2091	
6568	PAVE MARKING - THERMO STOP BAR - 24 INCH	LF	284	
6574	PAVE MARKING - THERMO CURV ARROW	EACH	24	
8001	STRUCTURE EXCAVATION-COMMON (9)	CU YD	296	
8903	CRASH CUSHION TY VI CLASS BT TL3	EACH	4	
10020NS	FUEL ADJUSTMENT	DOLLAR	94373	
10030NS	ASPHALT ADJUSTMENT	DOLLAR	123375	
20550ND	SAWCUT PAVEMENT	LF	7885	
21289ED	LONGITUDINAL EDGE KEY (7)	LF	1165	
23139EN	STRIPING REMOVAL (3)	LF	33400	
23274EN11F	TURF REINFORCEMENT MAT TY 1	SQ YD	3575	
23624EC	REMOVE AND RESET CRASH CUSHION (3)	EACH	4	
23131ER701	PIPELINE VIDEO INSPECTION	LF	7406	
23158ES505	DETECTABLE WARNINGS	SQ FT	424	
23017EN	REMOVE AND DISPOSE OF ASBESTOS CEMENT PIPE (13)	LF	500	

- (A) EXCAVATION INCLUDES:
- 77,545 CY COMMON EXCAVATION (B)
  - 3,624 CY SOLID ROCK EXCAVATION
  - 1,120 CY DITCH EXCAVATION
  - 7,267 CY TRANSVERSE BENCHING
  - 11,522 CY EMBANKMENT BENCHING
  - 40 CY DITCH EXC FROM PIPE DRAIN SUMMARY
- 
- 101,118 CY TOTAL EXCAVATION
- EMBANKMENT INCLUDES:
- 62,736 CY EMBANKMENT
- 
- 62,736 CY TOTAL EMBANKMENT

NOTE:  
ESTIMATE FOR EARTHWORK CALCULATIONS FOR DESIGN ONLY. THE CONTRACTOR IS ADVISED THAT THE EARTHWORK CALCULATIONS SHOWN ARE FOR INFORMATION ONLY. ASSUMPTIONS FOR SHRINKAGE AND SWELL FACTORS ARE THE CONTRACTOR'S RESPONSIBILITY.

- (1) APPROXIMATELY 34 ACRES
- (2) ESTIMATED AT 2.125 M. GALLON PER MILE
- (3) FOR MAINTENANCE OF TRAFFIC; SEE NOTES (SHEET R59) FOR LOCATIONS OF TEMPORARY BARRIER AND GUARDRAIL
- (4) INCLUDES EXTRA 4 END TREATMENT TY 4A FOR MOT
- (5) ESTIMATED AT 10% SEEDING & PROTECTION
- (6) FOR ASPHALT PAVED ENTRANCE STRUCTURE (EXISTING SHOPPING CENTER ENTRANCE)
- (7) TO INCLUDE MILLING OF EXISTING LANE WHERE RIGHT TURN LANE IS ADDED ON A-A HIGHWAY AND US62X (SEE DETAIL ON SHEET R2D)
- (8) ADDITIONAL EXCAVATION MAY BE REQUIRED WHERE RECOMMENDED IN THE GEOTECHNICAL NOTES
- (9) FOR RETAINING WALL, GRAVITY TYPE, NON-REINFORCED ALONG US 62X (SEE SHEET R127 FOR DETAIL AND BASE DIMENSION MODIFICATION)
- (10) FOR DITCH LINING AT MULTIPLE LOCATIONS; SEE DITCH CHARTS ON PLAN SHEETS
- (11) TO INCLUDE ALL ITEMS NOT SPECIFICALLY LISTED ON SUMMARY SHEETS NEEDED TO MAINTAIN AND CONTROL TRAFFIC THROUGHOUT CONSTRUCTION
- (12) TO MEET STANDARD SPECIFICATIONS AND DETAILS AS SHOWN IN THE GEOTECHNICAL NOTES
- (13) EXACT LOCATIONS AND QUANTITIES TO BE DETERMINED

GENERAL SUMMARY

# GENERAL SUMMARY

PREPARED BY \_\_\_\_\_ DATE \_\_\_\_\_  
 CHECKED BY \_\_\_\_\_ DATE \_\_\_\_\_  
 APPROVED BY \_\_\_\_\_ DATE \_\_\_\_\_

ITEM CODE	ITEM	UNIT	TOTAL PROJECT
1310	REMOVE PIPE	LF	52
1585	REMOVE DROP BOX INLET (3)	EACH	2
1810	STANDARD CURB AND GUTTER	LF	14261
1820	LIP CURB AND GUTTER	LF	216
1821	LIP CURB AND GUTTER MOD	LF	277
1875	STANDARD HEADER CURB	LF	581
1880	BARRIER HEADER CURB	LF	32
1904	REMOVE CURB	LF	191
1946	MOUNTABLE MEDIAN TYPE 2A	SQ YD	70
1982	DELINEATOR FOR GUARDRAIL - WHITE	EACH	82
1984	DELINEATOR FOR BARRIER - WHITE	EACH	43
2003	RELOCATE TEMPORARY CONCRETE BARRIER (3)	LF	800
2091	REMOVE PAVEMENT	SQ YD	92
2159	TEMPORARY DITCH	LF	4173
2200	ROADWAY EXCAVATION (A)	CU YD	101118
2223	GRANULAR EMBANKMENT (9) (12)	CU YD	243
2242	WATER (2)	M GAL	3.38
2351	GUARDRAIL STEEL "W" BEAM SINGLE FACE	LF	2393.75
2360	GUARDRAIL TERMINAL SECTION NUMBER 1	EACH	3
2367	GUARDRAIL END TREATMENT TYPE 1	EACH	6
2381	REMOVE GUARDRAIL	LF	1064
2391	GUARDRAIL END TREATMENT TYPE 4A (4)	EACH	6
2397	TEMPORARY GUARDRAIL (3)	LF	2100
2429	RIGHT-OF-WAY MONUMENT TYPE 1	EACH	138
2432	WITNESS POST	EACH	3
2483	CHANNEL LINING CLASS II	TON	1056
2484	CHANNEL LINING CLASS III	TON	299
2545	CLEARING AND GRUBBING (1)	LS	1
2555	CONCRETE CLASS B (9)	CU YD	142.6
2562	TEMPORARY SIGNS (3)	SQ FT	782.5
2568	MOBILIZATION	LS	1
2569	DEMOBILIZATION	LS	1
2585	EDGE KEY	LF	373
2596	FABRIC-GEOTEXTILE TYPE I	SQ YD	810
2599	FABRIC-GEOTEXTILE TYPE IV	SQ YD	80437
2600	FABRIC-GEOTEXTILE TYPE IV FOR PIPE	SQ YD	20221
2611	HANDRAIL - TYPE A-1	LF	1874
2625	REMOVE HEADWALL	EACH	4
2650	MAINTAIN AND CONTROL TRAFFIC (11)	LS	1
2671	PORTABLE CHANGEABLE MESSAGE SIGN	EACH	2
2690	SAFELOADING	CU YD	8.3
2701	TEMPORARY SILT FENCE	LF	4173
2703	SILT TRAP TYPE "A"	EACH	34
2704	SILT TRAP TYPE "B"	EACH	34
2705	SILT TRAP TYPE "C"	EACH	34
2706	CLEAN SILT TRAP TYPE "A"	EACH	204
2707	CLEAN SILT TRAP TYPE "B"	EACH	204
2708	CLEAN SILT TRAP TYPE "C"	EACH	204
2709	CLEAN TEMPORARY SILT FENCE	LF	2000
2720	SIDEWALK-4 IN CONCRETE	SQ YD	443
2726	STAKING	LS	1
2731	REMOVE STRUCTURE (6)	LS	1
3171	CONCRETE BARRIER WALL TY 9T (3)	LF	2000

ITEM CODE	ITEM	UNIT	TOTAL PROJECT
5950	EROSION CONTROL BLANKET	SQ YD	4263
5952	TEMPORARY MULCH	SQ YD	163650
5953	TEMPORARY SEEDING AND PROTECTION (5)	SQ YD	16365
5960	FERTILIZER 10-20-20	TON	8.5
5963	INITIAL FERTILIZER	TON	5.1
5992	AGRICULTURAL LIMESTONE	TON	102
5985	SEEDING AND PROTECTION	SQ YD	163650
5990	SODDING (10)	SQ YD	532
6510	PAVEMENT STRIPING - TEMP PAINT - 4 INCH (3)	LF	33384
6514	PAVEMENT STRIPING - PERM PAINT - 4 INCH	LF	23865
6567	PAVE MARKING - THERMO STOP BAR - 12 INCH	LF	182
6569	PAVE MARKING - THERMO CROSS-HATCH	SQ FT	2091
6568	PAVE MARKING - THERMO STOP BAR - 24 INCH	LF	284
6574	PAVE MARKING - THERMO CURV ARROW	EACH	24
8001	STRUCTURE EXCAVATION-COMMON (9)	CU YD	296
8903	CRASH CUSHION TY VI CLASS BT TL3	EACH	4
10020NS	FUEL ADJUSTMENT	DOLLAR	94373
10030NS	ASPHALT ADJUSTMENT	DOLLAR	123375
20550ND	SAWCUT PAVEMENT	LF	7885
21289ED	LONGITUDINAL EDGE KEY (7)	LF	1165
23139EN	STRIPING REMOVAL (3)	LF	33400
23274EN11F	TURF REINFORCEMENT MAT TY 1	SQ YD	3575
23624EC	REMOVE AND RESET CRASH CUSHION (3)	EACH	4
23131ER701	PIPELINE VIDEO INSPECTION	LF	7406
23158ES505	DETECTABLE WARNINGS	SQ FT	424
23017EN	REMOVE AND DISPOSE OF ASBESTOS CEMENT PIPE (13)	LF	500

1 REVISED 08-19-2015

- (A) EXCAVATION INCLUDES:
- 77,545 CY COMMON EXCAVATION (B)
  - 3,624 CY SOLID ROCK EXCAVATION
  - 1,120 CY DITCH EXCAVATION
  - 7,267 CY TRANSVERSE BENCHING
  - 11,522 CY EMBANKMENT BENCHING
  - 40 CY DITCH EXC FROM PIPE DRAIN SUMMARY

---

  - 101,118 CY TOTAL EXCAVATION
- EMBANKMENT INCLUDES:
- 62,736 CY EMBANKMENT

---

  - 62,736 CY TOTAL EMBANKMENT

NOTE:  
ESTIMATE FOR EARTHWORK CALCULATIONS FOR DESIGN ONLY. THE CONTRACTOR IS ADVISED THAT THE EARTHWORK CALCULATIONS SHOWN ARE FOR INFORMATION ONLY. ASSUMPTIONS FOR SHRINKAGE AND SWELL FACTORS ARE THE CONTRACTOR'S RESPONSIBILITY.

- (1) APPROXIMATELY 34 ACRES
- (2) ESTIMATED AT 2.125 M. GALLON PER MILE
- (3) FOR MAINTENANCE OF TRAFFIC; SEE NOTES (SHEET R59) FOR LOCATIONS OF TEMPORARY BARRIER AND GUARDRAIL
- (4) INCLUDES EXTRA 4 END TREATMENT TY 4A FOR MOT
- (5) ESTIMATED AT 10% SEEDING & PROTECTION
- (6) FOR ASPHALT PAVED ENTRANCE STRUCTURE (EXISTING SHOPPING CENTER ENTRANCE)
- (7) TO INCLUDE MILLING OF EXISTING LANE WHERE RIGHT TURN LANE IS ADDED ON A-A HIGHWAY AND US62X (SEE DETAIL ON SHEET R2D)
- (8) ADDITIONAL EXCAVATION MAY BE REQUIRED WHERE RECOMMENDED IN THE GEOTECHNICAL NOTES
- (9) FOR RETAINING WALL, GRAVITY TYPE, NON-REINFORCED ALONG US 62X (SEE SHEET R127 FOR DETAIL AND BASE DIMENSION MODIFICATION)
- (10) FOR DITCH LINING AT MULTIPLE LOCATIONS; SEE DITCH CHARTS ON PLAN SHEETS
- (11) TO INCLUDE ALL ITEMS NOT SPECIFICALLY LISTED ON SUMMARY SHEETS NEEDED TO MAINTAIN AND CONTROL TRAFFIC THROUGHOUT CONSTRUCTION
- (12) TO MEET STANDARD SPECIFICATIONS AND DETAILS AS SHOWN IN THE GEOTECHNICAL NOTES
- (13) EXACT LOCATIONS AND QUANTITIES TO BE DETERMINED

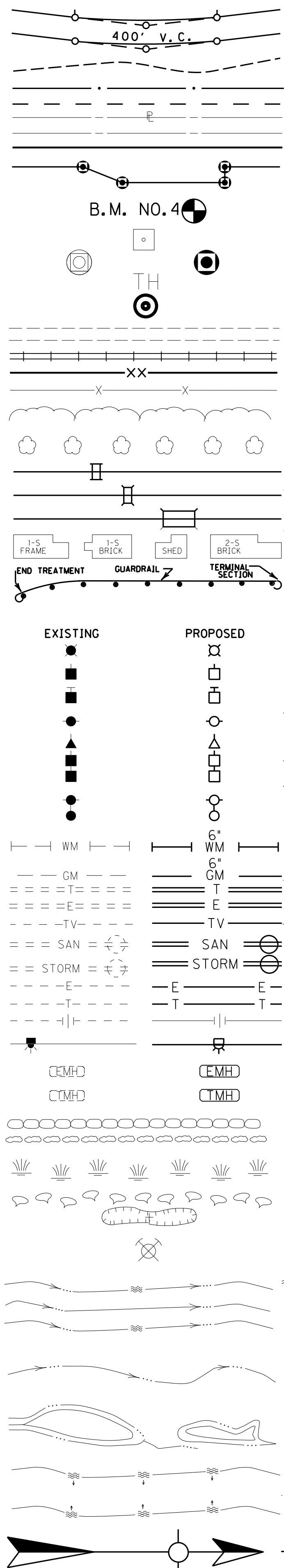
1 CHANGED QUANTITY FOR ITEM 1310 FROM 78 TO 52  
 CHANGED QUANTITY FOR ITEM 2483 FROM 1051 TO 1056  
 CHANGED QUANTITY FOR ITEM 2625 FROM 7 TO 4





### CONVENTIONAL SIGNS

- SURVEY LINE
- GRADE LINE
- GROUND LINE
- COUNTY LINE
- CORPORATE LIMITS
- EXIST. PROPERTY LINE
- EXIST. RIGHT OF WAY & PROPERTY LINE
- PROPOSED RIGHT OF WAY
- RIGHT OF WAY MONUMENT
- BENCH MARK
- EXISTING R/W MARKER
- RIGHT OF WAY MONUMENT EXISTING/PROPOSED
- UTILITY TEST HOLE
- EXISTING ROAD
- RAILROAD
- FENCE (CONTROLLED ACCESS)
- FENCE (EXCEPT STONE AND HEDGE)
- TREE LINE
- TREES
- PIPE CULVERT
- CULVERT
- BRIDGE
- BUILDINGS
- GUARDRAIL
- LIGHTING POLE
- POWER POLE
- JOINT POWER & TELEPHONE POLE
- TELEPHONE & TELEGRAPH POLE
- ANCHOR, POWER OR TELEPHONE
- STUB POWER
- STUB TELEPHONE
- WATER MAIN
- GAS MAIN
- TELEPHONE DUCT
- ELECTRIC DUCT
- DIRECT BURIAL TV CABLE
- SANITARY SEWER (WITH MANHOLE)
- STORM SEWER (WITH MANHOLE)
- DIRECT BURIAL ELECTRIC CABLE
- DIRECT BURIAL TELEPHONE CABLE
- OVERHEAD WIRE
- TRAFFIC LIGHTS
- ELECTRIC MANHOLE
- TELEPHONE MANHOLE
- STONE FENCE
- HEDGE FENCE
- SWAMP OR MARSH
- SPRINGS
- SINKHOLE
- QUARRY SITE
- BLUE LINE STREAM
- INTERMITTENT STREAM OR DITCH
- LAKES OR PONDS
- REGULATED FLOODWAY
- NORTH POINT



REMOVE EXISTING GUARDRAIL		
LT	STATION TO STATION	LF
LT	100+44 - 102+00	220

STEEL "W" BEAM GUARDRAIL CONSTRUCTION CHART						
LT	RT	STATION TO STATION	SINGLE FACE (FT)	END TREATMENT TY 1 (Ea)	END TREATMENT TY 4A (Ea)	TERM SECT NO. 1 (Ea)
X		100+44.00 - 102+00.00	187.5			

DITCH CONSTRUCTION CHART									
LT	RT	MED	STA. TO STA.	TYPE	QUANTITY	DEPTH	THICKNESS	DITCH	
X			308+00 to 309+33	ERO BLANKET	148 SY	1.00		2.0 F.B.	
X			100+70 to 101+50	ERO BLANKET	80 SY	1.00		2.0 F.B.	
X			101+50 to 102+00	TURF REINF MAT	50 SY	1.00		2.0 F.B.	
X			102+00 to OUTLET	CLASS II	5 TONS	1.00	1.25	2.0 F.B.	

CONSTRUCT STANDARD CURB & GUTTER		
LT	STATION TO STATION	LF
LT	101+19.46 - 102+00.00	78
RT	101+03.20 - 102+00.00	100

CONSTRUCT MULTI-USE PATH		
LT	STATION TO STATION	SY
RT	100+64.80 - 102+00.00	114

NOTE: UTILITY LOCATION WAS DONE TO QUALITY LEVEL C

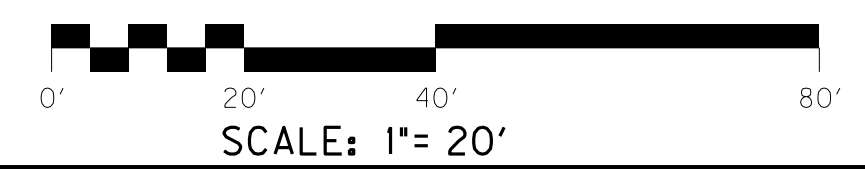
STA. 100+16.82  
BEGIN CONSTRUCTION PROJECT

STA. 309+94.00 AA HIGHWAY =  
STA. 99+97.98 KY 1448

TYE TO EXIST.  
KY 1448  
PI STA. 103+10.92  
 $\Delta=45^{\circ}12'40''$  LT  
T=296.04'  
L=561.04'  
R=711.00'  
E=59.17'  
 $\theta=4\%$   
Runoff=SEE SECTIONS  
Runout=SEE SECTIONS  
DESIGN SPEED=45 MPH

- FLEMING-MASON RECC  
PO BOX 328  
FLEMINGSBURG, KY 41041  
ANTHONY MARSHALL (606) 845-2661
- KENTUCKY UTILITIES  
215 WALL STREET  
P.O. BOX 70  
MAYSVILLE KY 41056  
MICHAEL STITT (606) 564-5047
- COLUMBIA GAS OF KENTUCKY  
325 MOODY DRIVE  
MAYSVILLE, KY 41056  
GREGORY WALTERS (606) 584-1081
- COLUMBIA GAS OF KENTUCKY (TRANSMISSION)  
PHILLIP MESSER (606) 724-2700
- MAYSVILLE UTILITY COMMISSION  
216 BRIDGE STREET  
PO BOX 406  
MAYSVILLE, KY 41056  
EDDIE WENZ (606) 564-3531
- SOUTHERN MASON WATER DISTRICT  
P.O. BOX 70  
MAYS LICK, KY 41055  
SCOTT GULLY (606) 845-0555
- LIMESTONE CABLE  
P.O. BOX 100  
MAYSVILLE, KY 41056  
RONALD BUERKLEY (606) 564-9220
- AT&T KENTUCKY  
1535 TWILIGHT TRAIL  
FRANKFORT, KY 40601  
BRENDA H. RICHARDS (502) 875-5983

DESIGN SPEED  
45 MPH



DESIGNED BY: \_\_\_\_\_  
DATE SUBMITTED: \_\_\_\_\_

**Commonwealth of Kentucky**  
**DEPARTMENT OF HIGHWAYS**  
COUNTY OF

**MASON**  
EAST MAPLE LEAF ROAD

PROJECT FD04 SPP 081 1448 005-007  
NUMBERS: \_\_\_\_\_

KY 1448  
PLAN SHEET  
BEGIN PROJECT TO STA. 102+00

**BEFORE YOU DIG**

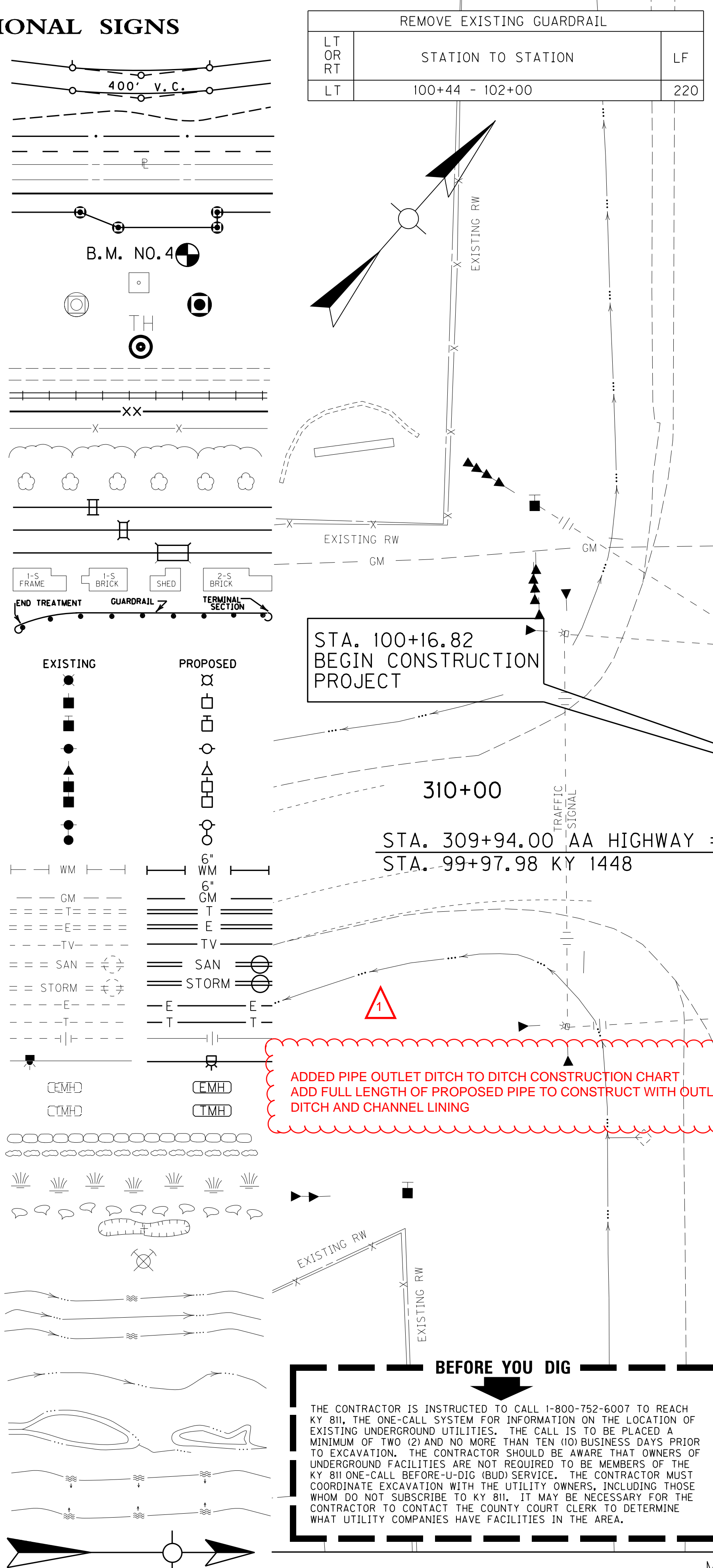
THE CONTRACTOR IS INSTRUCTED TO CALL 1-800-752-6007 TO REACH KY 811, THE ONE-CALL SYSTEM FOR INFORMATION ON THE LOCATION OF EXISTING UNDERGROUND UTILITIES. THE CALL IS TO BE PLACED A MINIMUM OF TWO (2) AND NO MORE THAN TEN (10) BUSINESS DAYS PRIOR TO EXCAVATION. THE CONTRACTOR SHOULD BE AWARE THAT OWNERS OF UNDERGROUND FACILITIES ARE NOT REQUIRED TO BE MEMBERS OF THE KY 811 ONE-CALL BEFORE-DIG (IBID) SERVICE. THE CONTRACTOR MUST COORDINATE EXCAVATION WITH THE UTILITY OWNERS, INCLUDING THOSE WHOM DO NOT SUBSCRIBE TO KY 811. IT MAY BE NECESSARY FOR THE CONTRACTOR TO CONTACT THE COUNTY COURT CLERK TO DETERMINE WHAT UTILITY COMPANIES HAVE FACILITIES IN THE AREA.

FILE NAME: J:\KDOT\MASON KY1448\SENT\2015-08-19 CONST REV\AR0300PL.DGN  
 USER: jeffc  
 DATE PLOTTED: August 19, 2015  
 E-SHEET NAME:  
 MicroStation v8.11.9.608

REVISED 08-19-2015

### CONVENTIONAL SIGNS

- SURVEY LINE
- GRADE LINE
- GROUND LINE
- COUNTY LINE
- CORPORATE LIMITS
- EXIST. PROPERTY LINE
- EXIST. RIGHT OF WAY & PROPERTY LINE
- PROPOSED RIGHT OF WAY
- RIGHT OF WAY MONUMENT
- BENCH MARK
- EXISTING R/W MARKER
- RIGHT OF WAY MONUMENT EXISTING/PROPOSED
- UTILITY TEST HOLE
- EXISTING ROAD
- RAILROAD
- FENCE (CONTROLLED ACCESS)
- FENCE (EXCEPT STONE AND HEDGE)
- TREE LINE
- TREES
- PIPE CULVERT
- CULVERT
- BRIDGE
- BUILDINGS
- GUARDRAIL
- LIGHTING POLE
- POWER POLE
- JOINT POWER & TELEPHONE POLE
- TELEPHONE & TELEGRAPH POLE
- ANCHOR, POWER OR TELEPHONE
- STUB POWER
- STUB TELEPHONE
- WATER MAIN
- GAS MAIN
- TELEPHONE DUCT
- ELECTRIC DUCT
- DIRECT BURIAL TV CABLE
- SANITARY SEWER (WITH MANHOLE)
- STORM SEWER (WITH MANHOLE)
- DIRECT BURIAL ELECTRIC CABLE
- DIRECT BURIAL TELEPHONE CABLE
- OVERHEAD WIRE
- TRAFFIC LIGHTS
- ELECTRIC MANHOLE
- TELEPHONE MANHOLE
- STONE FENCE
- HEDGE FENCE
- SWAMP OR MARSH
- SPRINGS
- SINKHOLE
- QUARRY SITE
- BLUE LINE STREAM
- INTERMITTENT STREAM OR DITCH
- LAKES OR PONDS
- REGULATED FLOODWAY
- NORTH POINT



LT	RT	STATION TO STATION	LF
LT		100+44 - 102+00	220

STEEL "W" BEAM GUARDRAIL CONSTRUCTION CHART						
LT	RT	STATION TO STATION	SINGLE FACE (FT)	END TREATMENT TY 1 (Ea)	END TREATMENT TY 4A (Ea)	TERM SECT NO. 1 (Ea)
X		100+44.00 - 102+00.00	187.5			

DITCH CONSTRUCTION CHART								
LT	RT	MED	STA. TO STA.	TYPE	QUANTITY	DEPTH	THICKNESS	DITCH
X			308+00 to 309+33	ERO BLANKET	148 SY	1.00		2.0 F.B.
X			100+70 to 101+50	ERO BLANKET	80 SY	1.00		2.0 F.B.
X			101+50 to 102+00	TURF REIN. MAT	50 SY	1.00		2.0 F.B.
X			102+00 to OUTLET	CLASS II	5 TONS	1.00	1.25	2.0 F.B.

CONSTRUCT STANDARD CURB & GUTTER			
LT	RT	STATION TO STATION	LF
LT		101+19.46 - 102+00.00	78
RT		101+03.20 - 102+00.00	100

CONSTRUCT MULTI-USE PATH			
LT	RT	STATION TO STATION	SY
RT		100+64.80 - 102+00.00	114

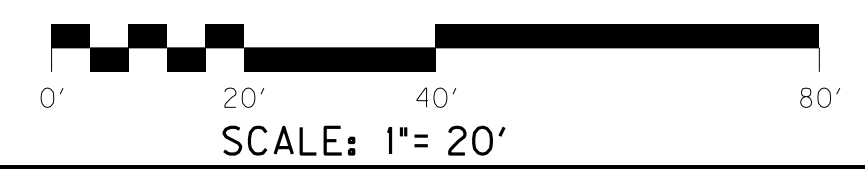
NOTE: UTILITY LOCATION WAS DONE TO QUALITY LEVEL C

RT STA 100+72 CONST 36SF DETECTABLE WARNINGS

RT STA. 308+00 TO 311+06 306 LF SAWCUT AND LONGITUDINAL EDGE KEY

- FLEMING-MASON RECC  
PO BOX 328  
FLEMINGSBURG, KY 41041  
ANTHONY MARSHALL (606) 845-2661
- KENTUCKY UTILITIES  
215 WALL STREET  
P.O. BOX 70  
MAYSVILLE, KY 41056  
MICHAEL STITT (606) 564-5047
- COLUMBIA GAS OF KENTUCKY  
325 MOODY DRIVE  
MAYSVILLE, KY 41056  
GREGORY WALTERS (606) 584-1081
- COLUMBIA GAS OF KENTUCKY (TRANSMISSION)  
PHILLIP MESSER (606) 724-2700
- MAYSVILLE UTILITY COMMISSION  
216 BRIDGE STREET  
PO BOX 406  
MAYSVILLE, KY 41056  
EDDIE WENZ (606) 564-3531
- SOUTHERN MASON WATER DISTRICT  
P.O. BOX 70  
MAYS LICK, KY 41055  
SCOTT GULLY (606) 845-0555
- LIMESTONE CABLE  
P.O. BOX 100  
MAYSVILLE, KY 41056  
RONALD BUERKLEY (606) 564-9220
- AT&T KENTUCKY  
1535 TWILIGHT TRAIL  
FRANKFORT, KY 40601  
BRENDA H. RICHARDS (502) 875-5983

DESIGN SPEED  
45 MPH



DESIGNED BY: \_\_\_\_\_  
DATE SUBMITTED: \_\_\_\_\_

**Commonwealth of Kentucky**  
**DEPARTMENT OF HIGHWAYS**  
COUNTY OF

**MASON**  
EAST MAPLE LEAF ROAD

PROJECT: FD04 SPP 081 1448 005-007  
NUMBERS: \_\_\_\_\_

KY 1448  
PLAN SHEET  
BEGIN PROJECT TO STA. 102+00

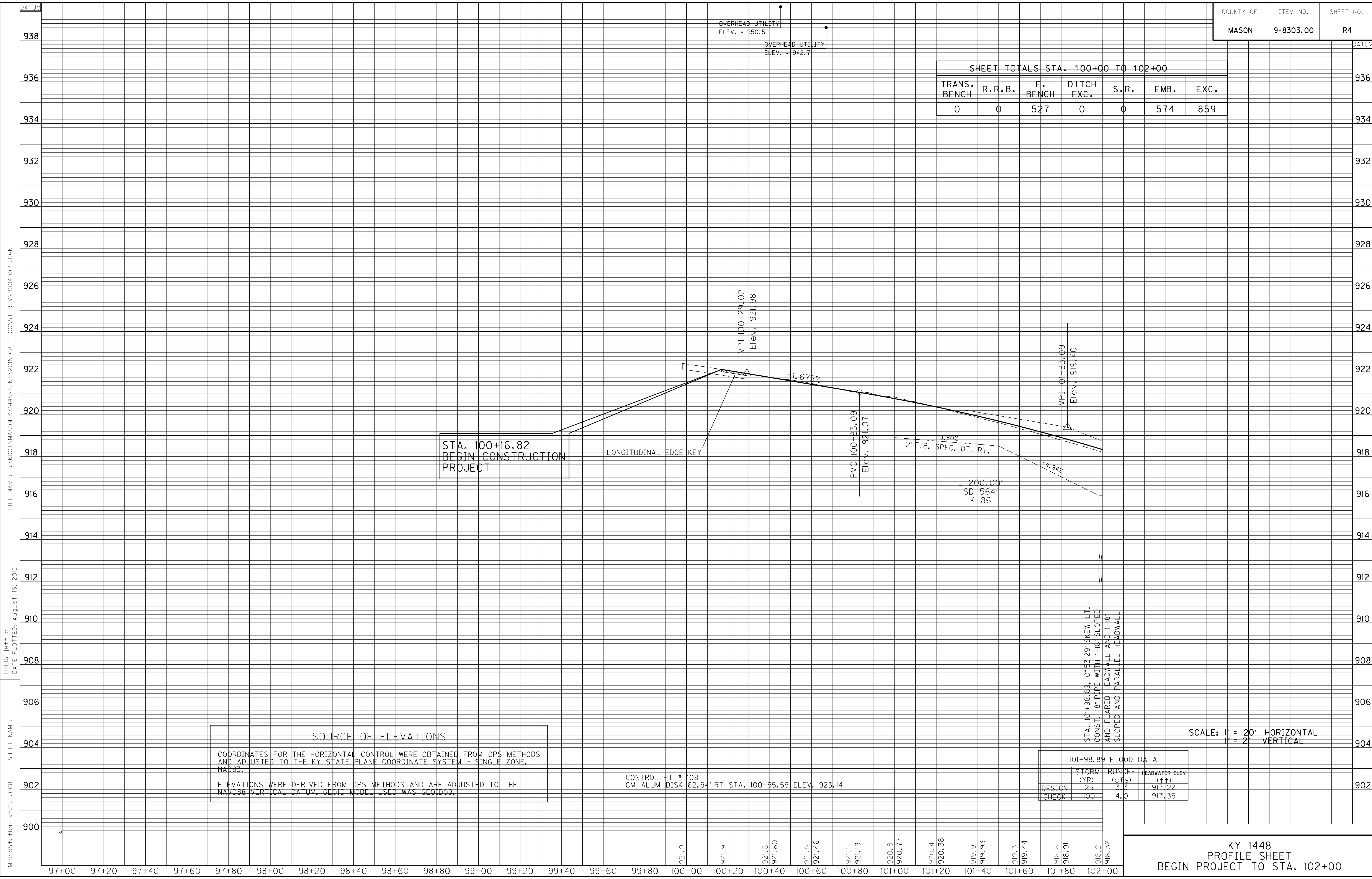
**BEFORE YOU DIG**

THE CONTRACTOR IS INSTRUCTED TO CALL 1-800-752-6007 TO REACH KY 811, THE ONE-CALL SYSTEM FOR INFORMATION ON THE LOCATION OF EXISTING UNDERGROUND UTILITIES. THE CALL IS TO BE PLACED A MINIMUM OF TWO (2) AND NO MORE THAN TEN (10) BUSINESS DAYS PRIOR TO EXCAVATION. THE CONTRACTOR SHOULD BE AWARE THAT OWNERS OF UNDERGROUND FACILITIES ARE NOT REQUIRED TO BE MEMBERS OF THE KY 811 ONE-CALL BEFORE-DIG (BD) SERVICE. THE CONTRACTOR MUST COORDINATE EXCAVATION WITH THE UTILITY OWNERS, INCLUDING THOSE WHOM DO NOT SUBSCRIBE TO KY 811. IT MAY BE NECESSARY FOR THE CONTRACTOR TO CONTACT THE COUNTY COURT CLERK TO DETERMINE WHAT UTILITY COMPANIES HAVE FACILITIES IN THE AREA.

FILE NAME: J:\KDOT\MASON\KY1448\SENT\2015-08-19 CONST REV\AR0300PL.DGN  
 USER: jeff-c  
 DATE PLOTTED: August 19, 2015  
 E-SHEET NAME:  
 MicroStation v8.11.9.608

MATCH LINE SHEET 3A STA. 308+00

SHEET TOTALS STA. 100+00 TO 102+00						
TRANS. BENCH	R.R.B.	E. BENCH	DITCH EXC.	S.R.	EMB.	EXC.
0	0	527	0	0	574	859



STA. 100+16.82  
BEGIN CONSTRUCTION  
PROJECT

LONGITUDINAL EDGE KEY

2' F.B. SPEC. DT. RT.  
L 200.00'  
SD 564'  
K 86

STA. 101+98.89, 0°53'29" SKEW LT.  
CONST. 18" PIPE WITH 1'-18" SLOPED  
AND FLARED HEADWALL AND 1'-18"  
SLOPED AND PARALLEL HEADWALL

SOURCE OF ELEVATIONS  
COORDINATES FOR THE HORIZONTAL CONTROL WERE OBTAINED FROM GPS METHODS AND ADJUSTED TO THE KY STATE PLANE COORDINATE SYSTEM - SINGLE ZONE, NAD83.  
ELEVATIONS WERE DERIVED FROM GPS METHODS AND ARE ADJUSTED TO THE NAVD88 VERTICAL DATUM. GEOID MODEL USED WAS GEOID09.

CONTROL PT # 108  
CM-ALUM DISK 62.94' RT STA. 100+95.59 ELEV. 923.14

101+98.89 FLOOD DATA		
DESIGN CHECK	STORM (YR)	RUNOFF (CFS)
	25	3.3
	100	4.0
		HEADWATER ELEV (FIP)
		917.22
		917.35

SCALE: 1" = 20' HORIZONTAL  
1" = 2' VERTICAL

MicroStation v8.11.9.608  
 E-SHEET NAME:  
 USER: jeff-c  
 DATE PLOTTED: August 19, 2015  
 FILE NAME: J:\KDOT\MASON KY1448\SENT\2015-08-19 CONST REVAR00400PF.DGN





REMOVE EXISTING GUARDRAIL		
LT OR RT	STATION TO STATION	LF
LT	102+00 - 102+58	60

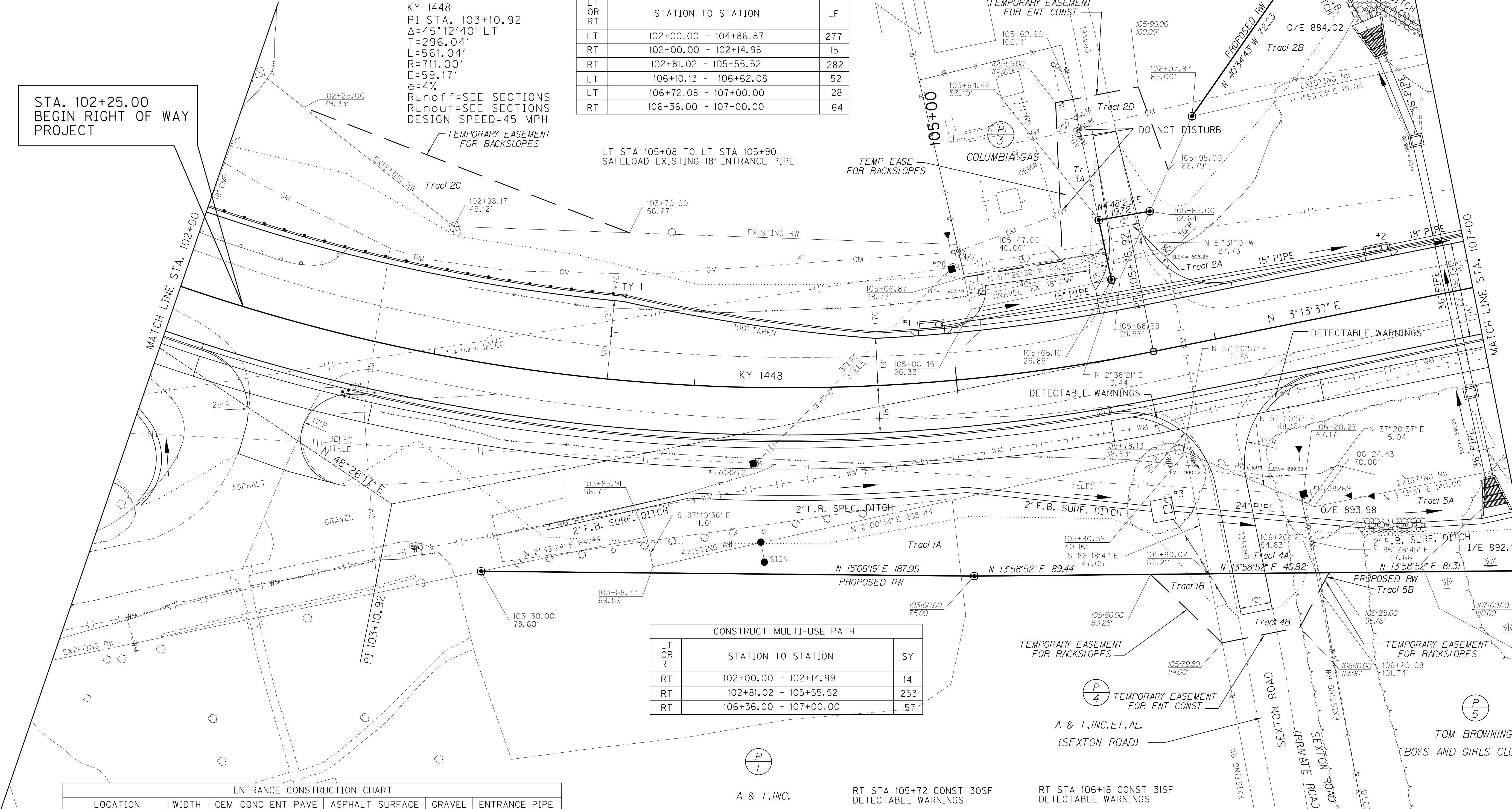
LT	RT	MED	STA. TO STA.	TYPE	QUANTITY	DEPTH	THICKNESS	DITCH
X			102+00 to 102+10	TURF REINF MAT	42 SY	1.00		2.0 F.B.
X			103+50 to 104+00	TURF REINF MAT	33 SY	1.00		2.0 F.B.
X			104+00 to 105+00	TURF REINF MAT	100 SY	1.00		2.0 F.B.
X			105+00 to 105+69	TURF REINF MAT	46 SY	1.00		2.0 F.B.
X			106+41 to 106+65	CLASS II	10 TON	1.00	1.25	2.0 F.B.
X			106+65 to 106+92	TURF REINF MAT	18 SY	1.00		2.0 F.B.
X			106+92 to 107+00	TURF REINF MAT	10 SY	1.50		2.0 F.B.
X			ENT 105+95	ERO BLANKET	36 SY	1.00		V
X			106+80 to OUTLET	CLASS III	28 TON	2.00	2.00	4.0 F.B.
X			106+80 to 107+00	CLASS III	13 TON	1.00	2.00	2.0 F.B.

INLET #	DBI	CBI	TYPE	LT/RT/MED	STA.	TOP/GRATE THROAT	INVERT
1		CBI	A	LT	104+95	906.45	902.00
2		CBI	A	LT	106+70	903.73	899.00
3		DBI	3	RT	105+70 - 60' RT	901.00	897.62

LT OR RT	STATION TO STATION	LF
LT	102+00.00 - 104+86.87	277
RT	102+00.00 - 102+14.98	15
RT	102+81.02 - 105+55.52	282
LT	106+10.13 - 106+62.08	52
LT	106+72.08 - 107+00.00	28
RT	106+36.00 - 107+00.00	64

• EXTEND OUTLET PROTECTION 3' OVER THE UPSTREAM EDGE OF THE TURF REINFORCING MAT  
 KY 1448  
 PI STA. 103+10.92  
 $\Delta=45^{\circ}12'40''$  LT  
 $T=296.04'$   
 $L=561.04'$   
 $R=711.00'$   
 $E=59.17'$   
 $e=4\%$   
 Runoff=SEE SECTIONS  
 Runout=SEE SECTIONS  
 DESIGN SPEED=45 MPH

STA. 102+25.00  
 BEGIN RIGHT OF WAY  
 PROJECT

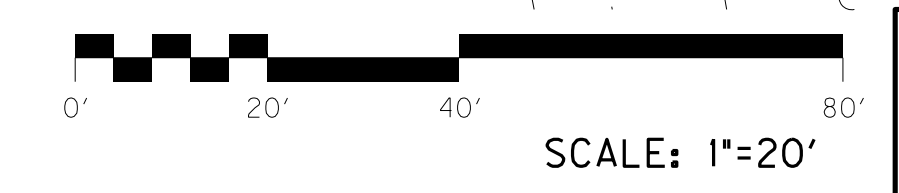


LT OR RT	STATION TO STATION	SY
RT	102+00.00 - 102+14.99	14
RT	102+81.02 - 105+55.52	253
RT	106+36.00 - 107+00.00	57

LOCATION	WIDTH	CEM CONC ENT PAVE	ASPHALT SURFACE	GRAVEL	ENTRANCE PIPE
LT RT STATION	FT	SY	SY	SY	LF SIZE
X X 102+48	21	94	65		
X X 105+36	40	25	62		
X X 105+74	12	22	106		
X X 105+95	12	113	114		74 24'

• WITH DBI TY 3

LT	RT	STATION TO STATION	SINGLE FACE (ft)	END TREATMENT TY 1 (Ea)	END TREATMENT TY 4A (Ea)	TERM SECT NO. 1 (Ea)
X		102+00.00 - 103+70.00	112.5	I		



KY 1448  
 PLAN SHEET  
 STA. 102+00 TO STA. 107+00

FILE NAME: J:\KDOT\MASON KY1448\SENT\2015-08-19 CONST REV\AR0500PL.DGN  
 USER: jeffc  
 DATE PLOTTED: August 19, 2015  
 E-SHEET NAME:  
 MicroStation v8.11.3.608

REMOVE EXISTING GUARDRAIL		
LT OR RT	STATION TO STATION	LF
LT	102+00 - 102+58	60

REVISD 08-19-2015

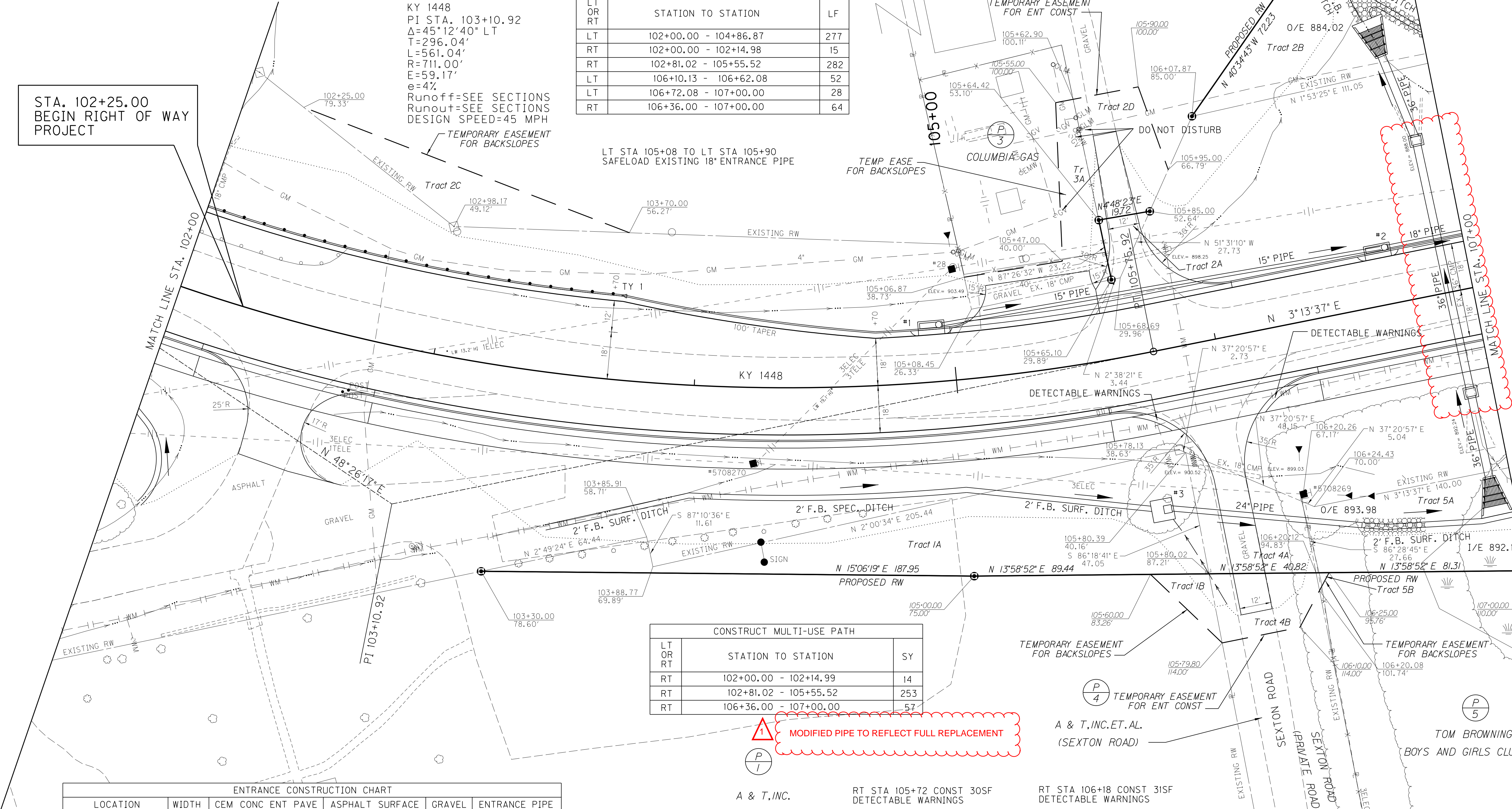
LT	RT	MED	STA. TO STA.	TYPE	QUANTITY	DEPTH	THICKNESS	DITCH
X			102+00 to 102+10	TURF REINF MAT	42 SY	1.00		2.0 F.B.
X			103+50 to 104+00	TURF REINF MAT	33 SY	1.00		2.0 F.B.
X			104+00 to 105+00	TURF REINF MAT	100 SY	1.00		2.0 F.B.
X			105+00 to 105+69	TURF REINF MAT	46 SY	1.00		2.0 F.B.
X			106+41 to 106+65	CLASS II	10 TON	1.00	1.25	2.0 F.B.
X			106+65 to 106+92	TURF REINF MAT	18 SY	1.00		2.0 F.B.
X			106+92 to 107+00	TURF REINF MAT	10 SY	1.50		2.0 F.B.
X			ENT 105+95	ERO BLANKET	36 SY	1.00		V
X			106+80 to OUTLET	CLASS III	28 TON	2.00	2.00	4.0 F.B.
X			106+80 to 107+00	CLASS III	13 TON	1.00	2.00	2.0 F.B.

INLET #	DBI	CBI	TYPE	LT/RT/MED	STA.	TOP/GRATE THROAT	INVERT
1		CBI	A	LT	104+95	906.45	902.00
2		CBI	A	LT	106+70	903.73	899.00
3		DBI	3	RT	105+70 - 60' RT	901.00	897.62

LT OR RT	STATION TO STATION	LF
LT	102+00.00 - 104+86.87	277
RT	102+00.00 - 102+14.98	15
RT	102+81.02 - 105+55.52	282
LT	106+10.13 - 106+62.08	52
LT	106+72.08 - 107+00.00	28
RT	106+36.00 - 107+00.00	64

KY 1448  
 PI STA. 103+10.92  
 $\Delta=45^{\circ}12'40''$  LT  
 $T=296.04'$   
 $L=561.04'$   
 $R=711.00'$   
 $E=59.17'$   
 $e=4\%$   
 Runoff=SEE SECTIONS  
 Runout=SEE SECTIONS  
 DESIGN SPEED=45 MPH

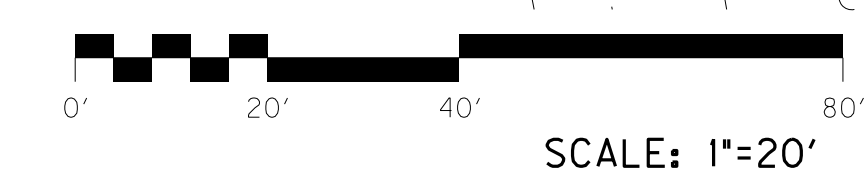
STA. 102+25.00  
BEGIN RIGHT OF WAY  
PROJECT



LT OR RT	STATION TO STATION	SY
RT	102+00.00 - 102+14.99	14
RT	102+81.02 - 105+55.52	253
RT	106+36.00 - 107+00.00	57

LOCATION	WIDTH	CEM CONC ENT PAVE	ASPHALT SURFACE	GRAVEL	ENTRANCE PIPE
LT RT STATION	FT	SY	SY	SY	LF SIZE
X X 102+48	21	94	65		
X X 105+36	40	25	62		
X X 105+74	12	22	106		
X X 105+95	12	113	114		74 24'

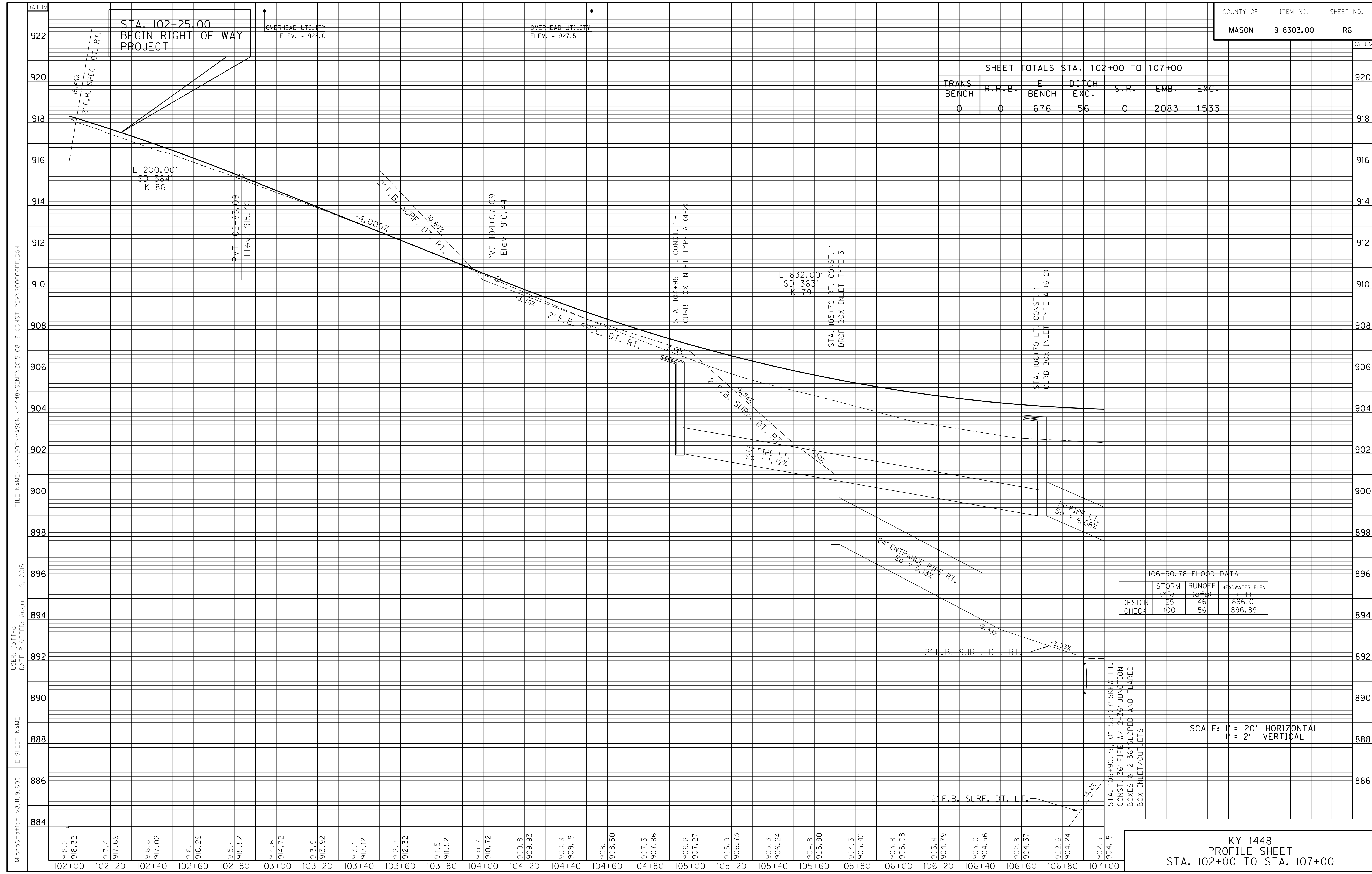
LT RT	STATION TO STATION	SINGLE FACE (FT)	END TREATMENT TY 1 (Ea)	END TREATMENT TY 4A (Ea)	TERM SECT NO. 1 (Ea)
X	102+00.00 - 103+70.00	112.5	I		



KY 1448  
 PLAN SHEET  
 STA. 102+00 TO STA. 107+00

FILE NAME: J:\KDOT\MASON KY1448\SENT\2015-08-19 CONST REV\AR0500PL.DGN  
 USER: jeff.c  
 DATE PLOTTED: August 19, 2015  
 E-SHEET NAME:  
 MicroStation v8.11.3.608

SHEET TOTALS STA. 102+00 TO 107+00						
TRANS. BENCH	R.R.B.	E. BENCH	DITCH EXC.	S.R.	EMB.	EXC.
0	0	676	56	0	2083	1533



106+90.78 FLOOD DATA			
	STORM (YR)	RUNOFF (cfs)	HEADWATER ELEV (ft)
DESIGN	25	46	896.01
CHECK	100	56	896.89

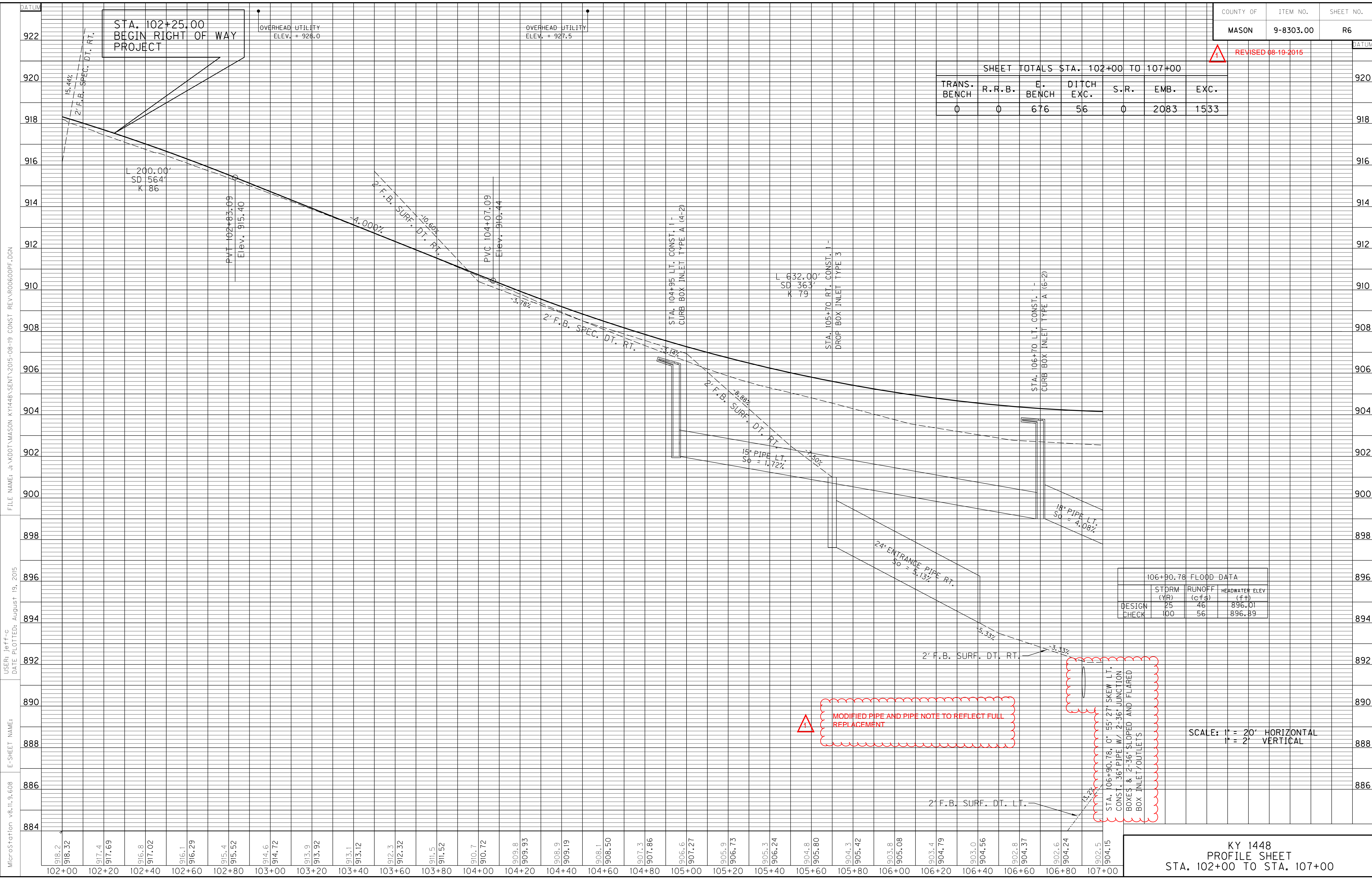
SCALE: 1" = 20' HORIZONTAL  
1" = 2' VERTICAL

KY 1448  
PROFILE SHEET  
STA. 102+00 TO STA. 107+00

MicroStation v8.11.9.608 E-SHEET NAME: USER: jeff-c DATE PLOTTED: August 19, 2015 FILE NAME: J:\KDOT\MASON KY1448\SENT\2015-08-19 CONST REVAR0600PF.DGN

REVISI 08-19-2015

SHEET TOTALS STA. 102+00 TO 107+00						
TRANS. BENCH	R.R.B.	E. BENCH	DITCH EXC.	S.R.	EMB.	EXC.
0	0	676	56	0	2083	1533



106+90.78 FLOOD DATA		
STORM (YR)	RUNOFF (cfs)	HEADWATER ELEV (ft)
DESIGN	25	46
CHECK	100	56
		896.01
		896.89

STA. 106+90.78, 0" 55' 27" SKEW LT. CONST. 36" PIPE W/ 2-36" JUNCTION BOXES & 2-36" SLOPED AND FLARED BOX INLET/OUTLETS

MODIFIED PIPE AND PIPE NOTE TO REFLECT FULL REPLACEMENT

SCALE: 1" = 20' HORIZONTAL  
1" = 2' VERTICAL

MicroStation v8.11.9.608 E-SHEET NAME: USER: jeff-c DATE PLOTTED: August 19, 2015 FILE NAME: J:\KDOT\MASON KY1448\SENT\2015-08-19 CONST REVAR0600PF.DGN

# PIPE DRAINAGE SHEET

1 of 35

COUNTY OF	ITEM NO.	SHEET NO.
MASON	9-8303.00	R81

STORM SEWER PIPE				CULVERT PIPE				DESIGN PH LEVEL	MAXIMUM COVER HEIGHT	SLOPED BOX OUTLET TYPE 1-18 IN	SLOPED BOX OUTLET TYPE 1-24 IN	S & F BOX INLET-OUTLET 18 IN	S & F BOX INLET-OUTLET 24 IN	S & F BOX INLET-OUTLET 36 IN	CURB BOX INLET TYPE A	CURB BOX INLET TYPE B	CURB BOX INLET TYPE F	DROP BOX INLET TYPE 1	DROP BOX INLET TYPE 3	DROP BOX INLET TYPE 14	DROP BOX INLET TYPE 15	JUNCTION BOX 18 IN	JUNCTION BOX 24 IN	JUNCTION BOX 36 IN	DITCH EXCAVATION	CONCRETE CLASS A	PIPE CULVERT HEADWALL - 18"
15'	18'	24'	36'	15'	18'	24'																					
<b>L I N E A R F E E T</b>								FT	EACH	EACH	EACH	EACH	EACH	EACH	EACH	EACH	EACH	EACH	EACH	EACH	EACH	EACH	EACH	CU. YD	CU. YD	EACH	

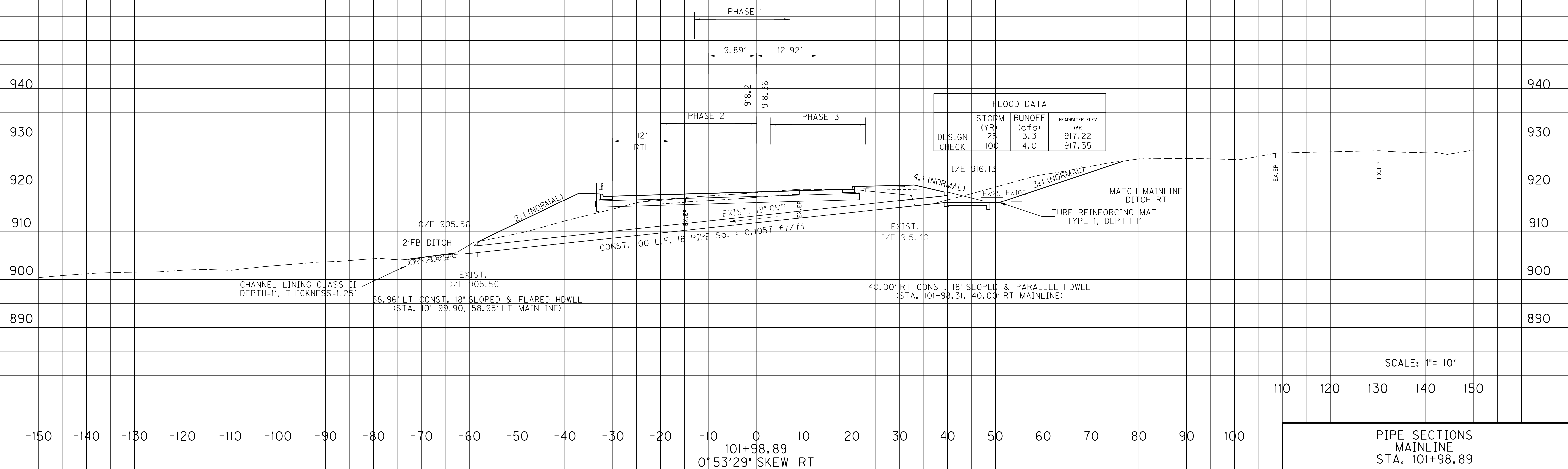
100

M

8.7

2

PREPARED BY \_\_\_\_\_ DATE \_\_\_\_\_  
 CHECKED BY \_\_\_\_\_ DATE \_\_\_\_\_  
 APPROVED BY \_\_\_\_\_ DATE \_\_\_\_\_



USER: PEC.jeff-c  
 DATE: 8/19/2015  
 FILE NAME: R08100PD.dgn  
 E-SHEET NAME: R08100PD.dgn

PIPE SECTIONS  
 MAINLINE  
 STA. 101+98.89

# PIPE DRAINAGE SHEET

1 of 35

COUNTY OF	ITEM NO.	SHEET NO.
MASON	9-8303.00	R81

## STORM SEWER PIPE

## CULVERT PIPE

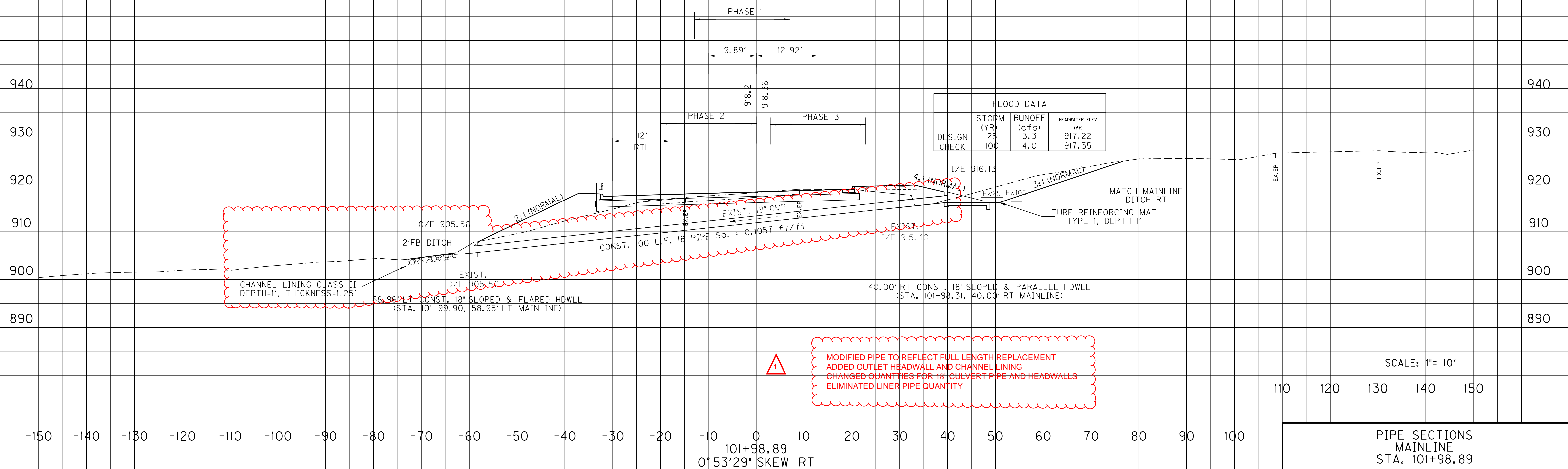
15"	18"	24"	36"	15"	18"		24"	DESIGN PH LEVEL	MAXIMUM COVER HEIGHT	SLOPED BOX OUTLET TYPE 1-18 IN	SLOPED BOX OUTLET TYPE 1-24 IN	S & F BOX INLET-OUTLET 18 IN	S & F BOX INLET-OUTLET 24 IN	S & F BOX INLET-OUTLET 36 IN	CURB BOX INLET TYPE A	CURB BOX INLET TYPE B	CURB BOX INLET TYPE F	DROP BOX INLET TYPE 1	DROP BOX INLET TYPE 3	DROP BOX INLET TYPE 14	DROP BOX INLET TYPE 15	JUNCTION BOX 18 IN	JUNCTION BOX 24 IN	JUNCTION BOX 36 IN	DITCH EXCAVATION	CONCRETE CLASS A	PIPE CULVERT HEADWALL - 18"
<b>L I N E A R F E E T</b>								FT	EACH	EACH	EACH	EACH	EACH	EACH	EACH	EACH	EACH	EACH	EACH	EACH	EACH	EACH	EACH	EACH	CU. YD	CU. YD	EACH

REVIS 08-19-2015

100

2

PREPARED BY \_\_\_\_\_ DATE \_\_\_\_\_  
 CHECKED BY \_\_\_\_\_ DATE \_\_\_\_\_  
 APPROVED BY \_\_\_\_\_ DATE \_\_\_\_\_



MODIFIED PIPE TO REFLECT FULL LENGTH REPLACEMENT  
 ADDED OUTLET HEADWALL AND CHANNEL LINING  
 CHANGED QUANTITIES FOR 18" CULVERT PIPE AND HEADWALLS  
 ELIMINATED LINER PIPE QUANTITY

SCALE: 1" = 10'

110 120 130 140 150

PIPE SECTIONS  
MAINLINE  
STA. 101+98.89

USER: PEC.jeff-c  
 DATE: 8/19/2015  
 FILE NAME: R08100PD.dgn  
 E-SHEET NAME: R08100PD.dgn

PIPE DRAINAGE SHEET

3 of 35

COUNTY OF	ITEM NO.	SHEET NO.
MASON	9-8303.00	R83

STORM SEWER PIPE

CULVERT PIPE

15' 18' 24' 36'

24' 30' 36'

DESIGN PH LEVEL

MAXIMUM COVER HEIGHT

SLOPED BOX OUTLET TYPE 1-18 IN

SLOPED BOX OUTLET TYPE 1-24 IN

S & F BOX INLET-OUTLET 18 IN

S & F BOX INLET-OUTLET 24 IN

S & F BOX INLET-OUTLET 36 IN

CURB BOX INLET TYPE A

CURB BOX INLET TYPE B

CURB BOX INLET TYPE F

DROP BOX INLET TYPE 1

DROP BOX INLET TYPE 3

DROP BOX INLET TYPE 14

DROP BOX INLET TYPE 15

JUNCTION BOX 18 IN

JUNCTION BOX 24 IN

JUNCTION BOX 36 IN

DITCH EXCAVATION

CONCRETE CLASS A

PIPE CULVERT HEADWALL - 18"

L I N E A R F E E T

FT

EACH

EACH

EACH

EACH

EACH

EACH

EACH

EACH

EACH

EACH

EACH

EACH

EACH

EACH

EACH

CU. YD

CU. YD

EACH

162

M

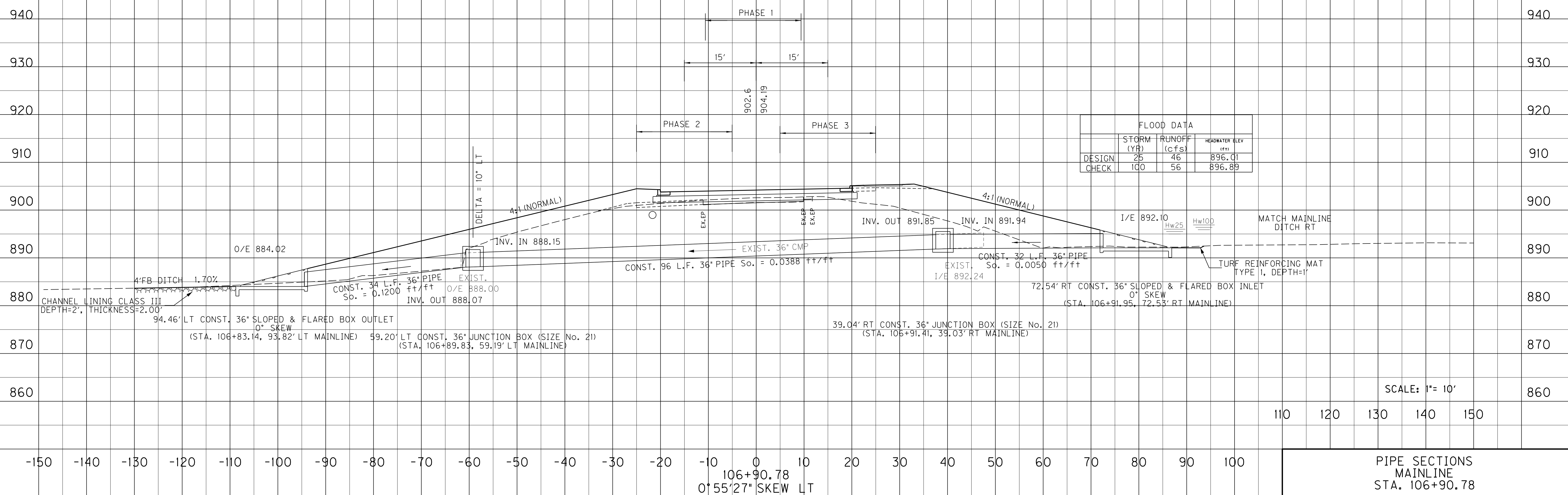
12.0

2

2

1

PREPARED BY \_\_\_\_\_ DATE \_\_\_\_\_  
 CHECKED BY \_\_\_\_\_ DATE \_\_\_\_\_  
 APPROVED BY \_\_\_\_\_ DATE \_\_\_\_\_



	STORM (YR)	RUNOFF (cfs)	HEADWATER ELEV (ft)
DESIGN	25	46	896.01
CHECK	100	56	896.89

USER: PEC.jeff-c  
 DATE: 8/19/2015  
 FILE NAME: R08300PD.dgn  
 E-SHEET NAME: R08300PD.dgn

SCALE: 1"= 10'

110 120 130 140 150

PIPE SECTIONS MAINLINE STA. 106+90.78



PIPE DRAINAGE SHEET

3 of 35

COUNTY OF	ITEM NO.	SHEET NO.
MASON	9-8303.00	R83

STORM SEWER PIPE

CULVERT PIPE

15'	18'	24'	36'	24'	30'	36'
-----	-----	-----	-----	-----	-----	-----

DESIGN PH LEVEL	MAXIMUM COVER HEIGHT	SLOPED BOX OUTLET TYPE 1-18 IN	SLOPED BOX OUTLET TYPE 1-24 IN	S & F BOX INLET-OUTLET 18 IN	S & F BOX INLET-OUTLET 24 IN	S & F BOX INLET-OUTLET 36 IN	CURB BOX INLET TYPE A	CURB BOX INLET TYPE B	CURB BOX INLET TYPE F	DROP BOX INLET TYPE 1	DROP BOX INLET TYPE 3	DROP BOX INLET TYPE 14	DROP BOX INLET TYPE 15	JUNCTION BOX 18 IN	JUNCTION BOX 24 IN	JUNCTION BOX 36 IN	DITCH EXCAVATION	CONCRETE CLASS A	PIPE CULVERT HEADWALL - 18"
	FT	EACH	EACH	EACH	EACH	EACH	EACH	EACH	EACH	EACH	EACH	EACH	EACH	EACH	EACH	EACH	CU. YD	CU. YD	EACH

REVIS 1 REVISION 08-19-2015

L I N E A R F E E T

162

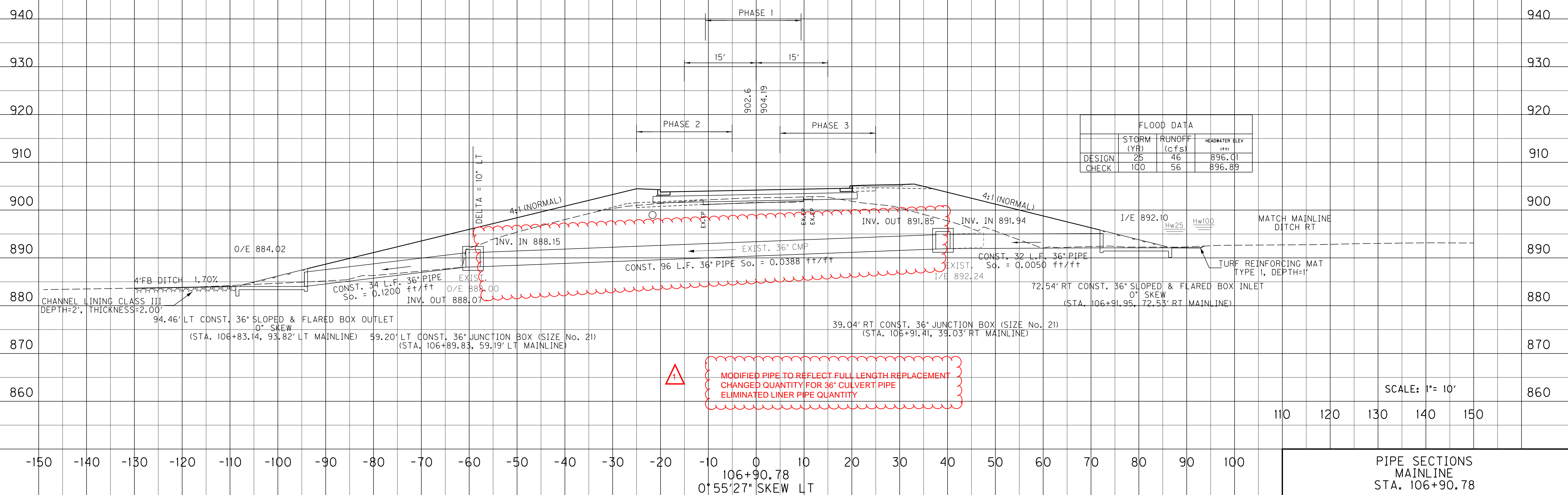
M 12.0

2

2

1

PREPARED BY \_\_\_\_\_ DATE \_\_\_\_\_  
 CHECKED BY \_\_\_\_\_ DATE \_\_\_\_\_  
 APPROVED BY \_\_\_\_\_ DATE \_\_\_\_\_



USER: PEC.jeff-c  
 DATE: 8/19/2015  
 FILE NAME: R08300PD.dgn  
 E-SHEET NAME: R08300PD.dgn

**PROPOSAL BID ITEMS**

REVISED ADDENDUM #2: 8-20-15

151242

Page 1 of 4

Report Date 8/20/15

**Section: 0001 - PAVING**

LINE	BID CODE	ALT	DESCRIPTION	QUANTITY	UNIT	UNIT PRIC	FP	AMOUNT
0010	00001		DGA BASE	2,685.00	TON		\$	
0020	00003		CRUSHED STONE BASE	16,585.00	TON		\$	
0030	00080		CRUSHED AGGREGATE SIZE NO 23	27,750.00	TON		\$	
0040	00100		ASPHALT SEAL AGGREGATE	10.00	TON		\$	
0050	00103		ASPHALT SEAL COAT	2.00	TON		\$	
0060	00190		LEVELING & WEDGING PG64-22	56.00	TON		\$	
0070	00214		CL3 ASPH BASE 1.00D PG64-22	24,698.00	TON		\$	
0080	00221		CL2 ASPH BASE 0.75D PG64-22	2,701.00	TON		\$	
0090	00301		CL2 ASPH SURF 0.38D PG64-22	1,343.00	TON		\$	
0100	00388		CL3 ASPH SURF 0.38B PG64-22	2,757.00	TON		\$	
0110	02101		CEM CONC ENT PAVEMENT-8 IN	1,312.00	SQYD		\$	
0120	02676		MOBILIZATION FOR MILL & TEXT	1.00	LS		\$	
0130	02677		ASPHALT PAVE MILLING & TEXTURING	26.00	TON		\$	

**Section: 0002 - ROADWAY**

LINE	BID CODE	ALT	DESCRIPTION	QUANTITY	UNIT	UNIT PRIC	FP	AMOUNT
0140	01310		REMOVE PIPE (REVISED: 8-20-15)	52.00	LF		\$	
0150	01585		REMOVE DROP BOX INLET	2.00	EACH		\$	
0160	01810		STANDARD CURB AND GUTTER	14,261.00	LF		\$	
0170	01820		LIP CURB AND GUTTER	216.00	LF		\$	
0180	01821		LIP CURB AND GUTTER MOD	277.00	LF		\$	
0190	01875		STANDARD HEADER CURB	581.00	LF		\$	
0200	01880		BARRIER HEADER CURB	32.00	LF		\$	
0210	01904		REMOVE CURB	191.00	LF		\$	
0220	01946		MOUNTABLE MEDIAN TYPE 2A	70.00	SQYD		\$	
0230	01982		DELINEATOR FOR GUARDRAIL MONO DIRECTIONAL WHITE	82.00	EACH		\$	
0240	01984		DELINEATOR FOR BARRIER - WHITE	43.00	EACH		\$	
0250	02003		RELOCATE TEMP CONC BARRIER	800.00	LF		\$	
0260	02091		REMOVE PAVEMENT	92.00	SQYD		\$	
0270	02159		TEMP DITCH	4,173.00	LF		\$	
0280	02200		ROADWAY EXCAVATION	101,118.00	CUYD		\$	
0290	02223		GRANULAR EMBANKMENT	243.00	CUYD		\$	
0300	02242		WATER	3.38	MGAL		\$	
0310	02351		GUARDRAIL-STEEL W BEAM-S FACE	2,393.75	LF		\$	
0320	02360		GUARDRAIL TERMINAL SECTION NO 1	3.00	EACH		\$	
0330	02367		GUARDRAIL END TREATMENT TYPE 1	6.00	EACH		\$	
0340	02381		REMOVE GUARDRAIL	1,064.00	LF		\$	
0350	02391		GUARDRAIL END TREATMENT TYPE 4A	6.00	EACH		\$	
0360	02397		TEMP GUARDRAIL	2,100.00	LF		\$	
0370	02429		RIGHT-OF-WAY MONUMENT TYPE 1	138.00	EACH		\$	
0380	02432		WITNESS POST	3.00	EACH		\$	
0390	02483		CHANNEL LINING CLASS II (REVISED: 8-20-15)	1,056.00	TON		\$	
0400	02484		CHANNEL LINING CLASS III	299.00	TON		\$	

### PROPOSAL BID ITEMS

151242

Page 2 of 4

Report Date 8/20/15

LINE	BID CODE	ALT	DESCRIPTION	QUANTITY	UNIT	UNIT PRIC	FP	AMOUNT
0410	02545		CLEARING AND GRUBBING (APPROXIMATELY 34 ACRES)	1.00	LS		\$	
0420	02555		CONCRETE-CLASS B	142.60	CUYD		\$	
0430	02562		TEMPORARY SIGNS	782.50	SQFT		\$	
0440	02585		EDGE KEY	373.00	LF		\$	
0450	02596		FABRIC-GEOTEXTILE TYPE I	810.00	SQYD		\$	
0460	02599		FABRIC-GEOTEXTILE TYPE IV	80,437.00	SQYD		\$	
0470	02600		FABRIC GEOTEXTILE TY IV FOR PIPE	20,221.00	SQYD	\$2.00	\$	\$40,442.00
0480	02611		HANDRAIL-TYPE A-1	1,874.00	LF		\$	
0490	02625		REMOVE HEADWALL (REVISED: 8-20-15)	4.00	EACH		\$	
0500	02650		MAINTAIN & CONTROL TRAFFIC	1.00	LS		\$	
0510	02671		PORTABLE CHANGEABLE MESSAGE SIGN	2.00	EACH		\$	
0520	02690		SAFELOADING	8.30	CUYD		\$	
0530	02701		TEMP SILT FENCE	4,173.00	LF		\$	
0540	02703		SILT TRAP TYPE A	34.00	EACH		\$	
0550	02704		SILT TRAP TYPE B	34.00	EACH		\$	
0560	02705		SILT TRAP TYPE C	34.00	EACH		\$	
0570	02706		CLEAN SILT TRAP TYPE A	204.00	EACH		\$	
0580	02707		CLEAN SILT TRAP TYPE B	204.00	EACH		\$	
0590	02708		CLEAN SILT TRAP TYPE C	204.00	EACH		\$	
0600	02709		CLEAN TEMP SILT FENCE	2,000.00	LF		\$	
0610	02720		SIDEWALK-4 IN CONCRETE	443.00	SQYD		\$	
0620	02726		STAKING	1.00	LS		\$	
0630	02731		REMOVE STRUCTURE	1.00	LS		\$	
0640	03171		CONCRETE BARRIER WALL TYPE 9T	2,000.00	LF		\$	
0650	05950		EROSION CONTROL BLANKET	4,263.00	SQYD		\$	
0660	05952		TEMP MULCH	163,650.00	SQYD		\$	
0670	05953		TEMP SEEDING AND PROTECTION	16,365.00	SQYD		\$	
0680	05960		FERTILIZER 10-20-20	8.50	TON		\$	
0690	05963		INITIAL FERTILIZER	5.10	TON		\$	
0700	05985		SEEDING AND PROTECTION	163,650.00	SQYD		\$	
0710	05990		SODDING	532.00	SQYD		\$	
0720	05992		AGRICULTURAL LIMESTONE	102.00	TON		\$	
0730	06510		PAVE STRIPING-TEMP PAINT-4 IN	33,384.00	LF		\$	
0740	06514		PAVE STRIPING-PERM PAINT-4 IN	23,865.00	LF		\$	
0750	06567		PAVE MARKING-THERMO STOP BAR-12IN	182.00	LF		\$	
0760	06568		PAVE MARKING-THERMO STOP BAR-24IN	284.00	LF		\$	
0770	06569		PAVE MARKING-THERMO CROSS-HATCH	2,091.00	SQFT		\$	
0780	06574		PAVE MARKING-THERMO CURV ARROW	24.00	EACH		\$	
0790	08001		STRUCTURE EXCAVATION-COMMON	296.00	CUYD		\$	
0800	08903		CRASH CUSHION TY VI CLASS BT TL3	4.00	EACH		\$	
0810	10020NS		FUEL ADJUSTMENT	94,373.00	DOLL	\$1.00	\$	\$94,373.00
0820	10030NS		ASPHALT ADJUSTMENT	123,375.00	DOLL	\$1.00	\$	\$123,375.00
0830	20550ND		SAWCUT PAVEMENT	7,885.00	LF		\$	
0840	21289ED		LONGITUDINAL EDGE KEY	1,165.00	LF		\$	
0850	23017EN		REM AND DISPOSE OF ASBESTOS CEMENT PIPE	500.00	LF		\$	
0860	24814EC		PIPELINE INSPECTION (REVISED: 8-17-12)	7,406.00	LF		\$	
0870	23139EN		STRIPING REMOVAL	33,400.00	LF		\$	

### PROPOSAL BID ITEMS

151242

Page 3 of 4

Report Date 8/20/15

LINE	BID CODE	ALT	DESCRIPTION	QUANTITY	UNIT	UNIT PRIC	FP	AMOUNT
0880	23158ES505		DETECTABLE WARNINGS	424.00	SQFT		\$	
0890	23274EN11F		TURF REINFORCEMENT MAT 1	3,575.00	SQYD		\$	
0900	23624EC		REMOVE AND RESET CRASH CUSHION	4.00	EACH		\$	

### Section: 0003 - DRAINAGE

LINE	BID CODE	ALT	DESCRIPTION	QUANTITY	UNIT	UNIT PRIC	FP	AMOUNT
0910	00078		CRUSHED AGGREGATE SIZE NO 2	6.00	TON		\$	
0920	00440		ENTRANCE PIPE-15 IN	447.00	LF		\$	
0930	00441		ENTRANCE PIPE-18 IN	46.00	LF		\$	
0940	00443		ENTRANCE PIPE-24 IN	74.00	LF		\$	
0950	00452		ENTRANCE PIPE-24 IN EQUIV	52.00	LF		\$	
0960	00461		CULVERT PIPE-15 IN	307.00	LF		\$	
0970	00462		CULVERT PIPE-18 IN (REVISED: 8-20-15)	225.00	LF		\$	
0980	00464		CULVERT PIPE-24 IN	56.00	LF		\$	
0990	00468		CULVERT PIPE-36 IN (REVISED: 8-20-15)	162.00	LF		\$	
1000	00520		STORM SEWER PIPE-12 IN	26.00	LF		\$	
1010	00521		STORM SEWER PIPE-15 IN	2,785.00	LF		\$	
1020	00522		STORM SEWER PIPE-18 IN	3,354.00	LF		\$	
1030	00524		STORM SEWER PIPE-24 IN	284.00	LF		\$	
1040	00526		STORM SEWER PIPE-30 IN	75.00	LF		\$	
1050	01000		PERFORATED PIPE-4 IN	396.00	LF		\$	
1060	01005		PERFORATED PIPE EDGE DRAIN-4 IN	9,235.00	LF		\$	
1070	01006		PERFORATED PIPE EDGE DRAIN-6 IN	2,412.00	LF		\$	
1080	01010		NON-PERFORATED PIPE-4 IN	626.00	LF		\$	
1090	01011		NON-PERFORATED PIPE-6 IN	51.00	LF		\$	
1100	01024		PERF PIPE HEADWALL TY 2-4 IN	1.00	EACH		\$	
1110	01028		PERF PIPE HEADWALL TY 3-4 IN	5.00	EACH		\$	
1120	01202		PIPE CULVERT HEADWALL-15 IN	6.00	EACH		\$	
1130	01204		PIPE CULVERT HEADWALL-18 IN (REVISED: 8-20-15)	13.00	EACH		\$	
1140	01210		PIPE CULVERT HEADWALL-30 IN	1.00	EACH		\$	
1150	01432		SLOPED BOX OUTLET TYPE 1-15 IN	1.00	EACH		\$	
1160	01433		SLOPED BOX OUTLET TYPE 1-18 IN	1.00	EACH		\$	
1170	01434		SLOPED BOX OUTLET TYPE 1-24 IN	6.00	EACH		\$	
1180	01450		S & F BOX INLET-OUTLET-18 IN	1.00	EACH		\$	
1190	01451		S & F BOX INLET-OUTLET-24 IN	1.00	EACH		\$	
1200	01453		S & F BOX INLET-OUTLET-36 IN	2.00	EACH		\$	
1210	01456		CURB BOX INLET TYPE A	45.00	EACH		\$	
1220	01480		CURB BOX INLET TYPE B	7.00	EACH		\$	
1230	01487		CURB BOX INLET TYPE F	1.00	EACH		\$	
1240	01490		DROP BOX INLET TYPE 1	1.00	EACH		\$	
1250	01496		DROP BOX INLET TYPE 3	6.00	EACH		\$	
1260	01511		DROP BOX INLET TYPE 5D	4.00	EACH		\$	
1270	01514		DROP BOX INLET TYPE 5E	1.00	EACH		\$	
1280	01550		DROP BOX INLET TYPE 12A	28.00	LF		\$	
1290	01577		DROP BOX INLET TYPE 14	4.00	EACH		\$	
1300	01580		DROP BOX INLET TYPE 15	1.00	EACH		\$	

## PROPOSAL BID ITEMS

151242

Page 4 of 4

Report Date 8/20/15

LINE	BID CODE	ALT	DESCRIPTION	QUANTITY	UNIT	UNIT PRIC	FP	AMOUNT
1310	01643		JUNCTION BOX-24 IN	2.00	EACH		\$	
1320	01645		JUNCTION BOX-36 IN	2.00	EACH		\$	
1330	08100		CONCRETE-CLASS A	15.03	CUYD		\$	
1350	23562EC		DROP BOX INLET TYPE 12A MODIFIED	60.00	LF		\$	
1360	23952EC		DRAINAGE JUNCTION BOX TY B	3.00	EACH		\$	

### Section: 0004 - SIGNALIZATION

LINE	BID CODE	ALT	DESCRIPTION	QUANTITY	UNIT	UNIT PRIC	FP	AMOUNT
1380	04793		CONDUIT-1 1/4 IN	1,982.00	LF		\$	
1390	04795		CONDUIT-2 IN	160.00	LF		\$	
1400	04811		ELECTRICAL JUNCTION BOX TYPE B	14.00	EACH		\$	
1410	04820		TRENCHING AND BACKFILLING	2,142.00	LF		\$	
1420	04830		LOOP WIRE	3,130.00	LF		\$	
1430	04844		CABLE-NO. 14/5C	6,586.00	LF		\$	
1440	04850		CABLE-NO. 14/1 PAIR	2,051.00	LF		\$	
1450	04885		MESSENGER-10800 LB	1,035.00	LF		\$	
1460	04895		LOOP SAW SLOT AND FILL	1,226.00	LF		\$	
1470	04931		INSTALL CONTROLLER TYPE 170	2.00	EACH		\$	
1480	04932		INSTALL STEEL STRAIN POLE	12.00	EACH		\$	
1490	04950		REMOVE SIGNAL EQUIPMENT	2.00	EACH		\$	
1500	06472		INSTALL SPAN MOUNTED SIGN	2.00	EACH		\$	
1510	20094ES835		TEMP RELOCATION OF SIGNAL HEAD	36.00	EACH		\$	
1520	20188NS835		INSTALL LED SIGNAL-3 SECTION	15.00	EACH		\$	
1530	20266ES835		INSTALL LED SIGNAL- 4 SECTION	3.00	EACH		\$	
1540	20408ES835		INSTALL LED BEACON-12 IN	8.00	EACH		\$	
1550	23068NN		REMOVE & REINSTALL COORDINATING UNIT	2.00	EACH		\$	
1560	23157EN		TRAFFIC SIGNAL POLE BASE	56.00	CUYD		\$	
1570	24525EC		ADVANCE WARNING FLASHER	2.00	EACH		\$	

### Section: 0005 - DEMOBILIZATION &/OR MOBILIZATION

LINE	BID CODE	ALT	DESCRIPTION	QUANTITY	UNIT	UNIT PRIC	FP	AMOUNT
1580	02568		MOBILIZATION	1.00	LS		\$	
1590	02569		DEMOBILIZATION	1.00	LS		\$	